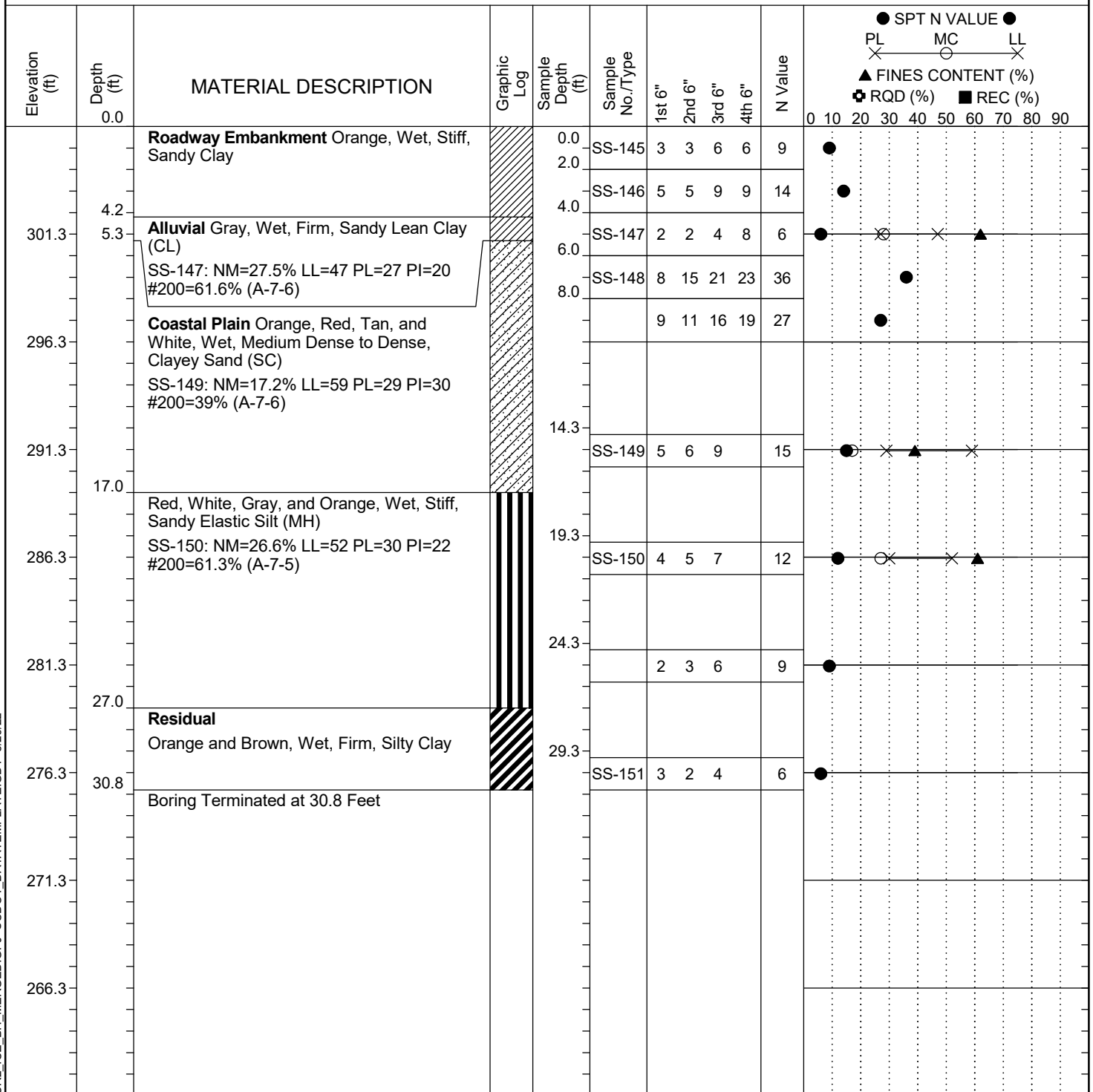


Project ID: P039719				County: Richland		Boring No.: G-015		
Site Description:		Carolina Crossroads Phase 2					Route: I-20	
Eng./Geo.: C. McIlroy		Boring Location: 394+85		Offset: 44 LT		Alignment: I20CL		
Elev.: 306.3 ft		Latitude: 34.03913363		Longitude: -81.0963254		Date Started: 3/17/2022		
Total Depth: 30.8 ft		Soil Depth: 30.8 ft		Core Depth: N/A ft		Date Completed: 3/17/2022		
Bore Hole Diameter (in): 2.25		Sampler Configuration		Liner Required: Y (N)		Liner Used: Y (N)		
Drill Machine: D-50 #435		Drill Method: RW		Hammer Type: Automatic		Energy Ratio: 84.4%		
Core Size: N/A		Driller: M. Morgan		Groundwater: TOB N/A		24HR N/A		



LEGEND

SAMPLER TYPE		DRILLING METHOD	
SS - Split Spoon	NQ - Rock Core, 1-7/8"	HSA - Hollow Stem Auger	RW - Rotary Wash
UD - Undisturbed Sample	CU - Cuttings	CFA - Continuous Flight Augers	RC - Rock Core
AWG - Rock Core, 1-1/8"	CT - Continuous Tube	DC - Driving Casing	